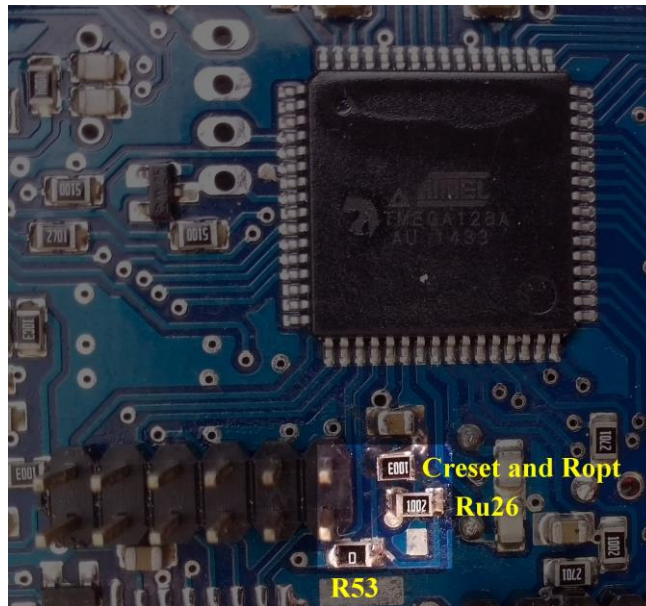


VEMS v3 genboard checklist before final assembly (srl 9900-10499)

If your VEMS v3 genboard's serial number is 9900-10499 please follow these instructions during assembly. On assembled ECUs normally done when applicable, but check if converting (eg. adding 3rd trigger or mcp3208/ch5 analog input).

- Check **reset circuit**. Solder the components if not already populated (for lower „reset impedance” and better noise suppression eg. during powerup):



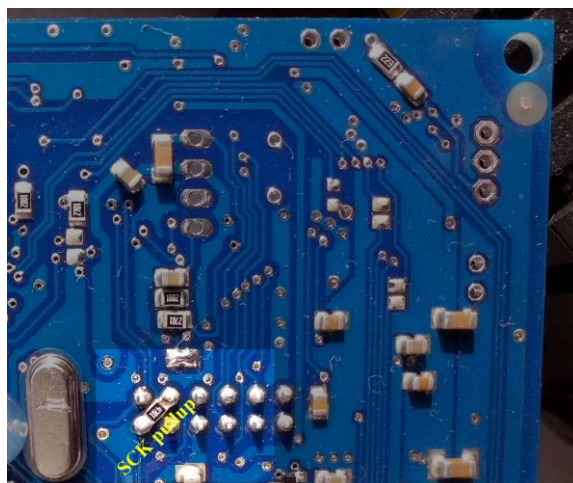
Creset = 220nF (parallel with Ropt)

Ropt = 100k is optional, piggybacked on top of Creset (which is required!)

Ru26 = 10k reset pullup

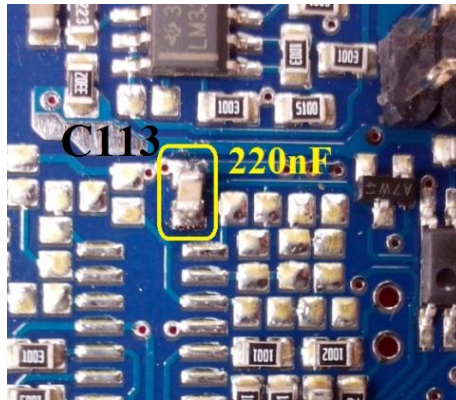
R53 = 0R (preferred; traditionally 1k)

- Check **SCK pullup** required. Solder the components if not already populated. (on ISP header, bottom side)



SCK pullup = 4k7 diagonally on ISP header, bottom side

- Check **Analog in mcp3208/Ch5's** input filter capacitor **C113** (above the unpopulated „midopa” IC). If missing, solder C113=220nF:



- If using **Third trigger**, on bottom side change **C105** capacitor to 1nF (originally soldered 220nF; already 1nF if ECU was ordered with 3rd trigger):

